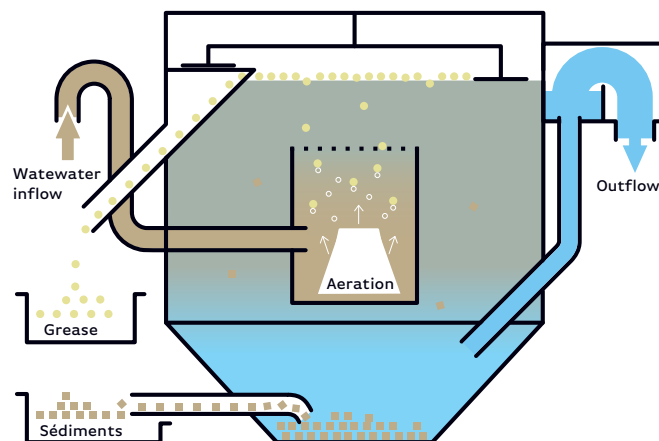


AERATED-SCRAPED DEGREASER

SERDAR

It is customary for water professionals to call this device a "Scraped Aerated Degreaser", but in fact it does not only separate grease.



Principle

It is customary for water professionals to call this device a "**Scraped Aerated Degreaser**", but in fact it does not only separate grease. Sands and other heavy materials settle to the bottom of the unit, while lighter particles are carried to the surface. The efficiency of extraction is of course much lower than what can be obtained with dissolved air flotation units, but the Scraped Aerated Degreaser **SERDAR** is a rustic device, simple to operate, and which allows considerable pre-treatment.

In some industries (mining and oil in particular) they are called "flotation units".

For very high contents in suspended solids effluents, this device is placed upstream of the dissolved air flotation unit **SERDAF**. It will ensure a considerable reduction of the suspended matter, thus facilitating the finishing work of the flotation unit.

The **SERINOL** Scraped Aerated Degreaser **SERDAR** is a cylindrical-conical device with support feet and stainless steel input/output boxes, ready to be connected, which significantly reduces assembly times on building sites.

An immersed turbine which sucks both water and air supplied by a tube from the

liquid surface is placed in the lower part of the cylindrical zone.

The transition between rotor and stator of the turbine, causes the division of the air into **fine bubbles of 1 to 2 mm** in diameter, which, while rising, stick to the particles (drops of grease and other) and drag them to the surface.

A two arms scraper sweeps the floating foam towards an evacuation chute.

The heavy sediments fall and accumulate in the bottom of the apparatus from where they are periodically extracted by opening a purge valve.

Design features

The degreasers consist in the following elements:

- A tank made of 3mm thick stainless steel metal sheets;
- A Clifford in the bottom of which is placed the turbine;

- A turbine, generating fine bubbles, easily removable for maintenance;
- An articulated scraper assembly driven by a gear motor;
- The clear water output box is equipped with a height-adjustable outfall weir, used

to adjust the water level in the degreaser.

CONNECTIONS

The inputs/outputs positioning is carried out upon request, depending on the configuration of the installation and customer's requirements.

Options

Platform

The Scraped Aerated Degreaser **SERDAR** can be equipped with a platform with guardrail to facilitate the operation, accessible by a cage ladder or a stair with guardrail.

Compactor

The recovered waste can be compacted with our **SERCOMP**.

Electrical panel

Can be equipped with an electrical panel.

Screen

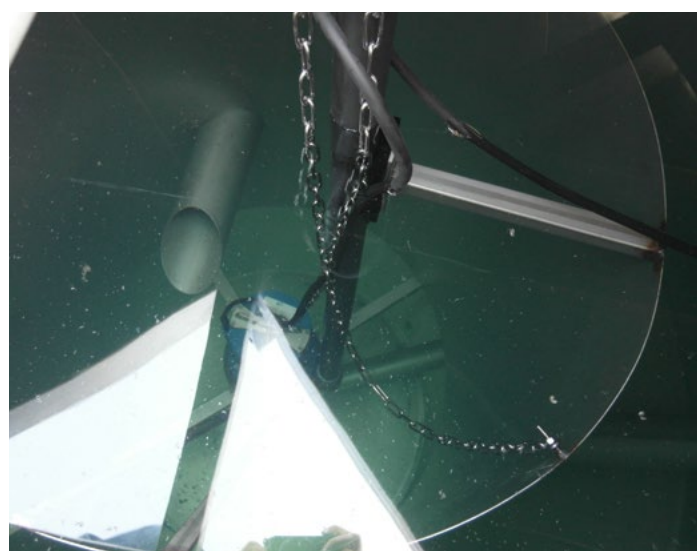
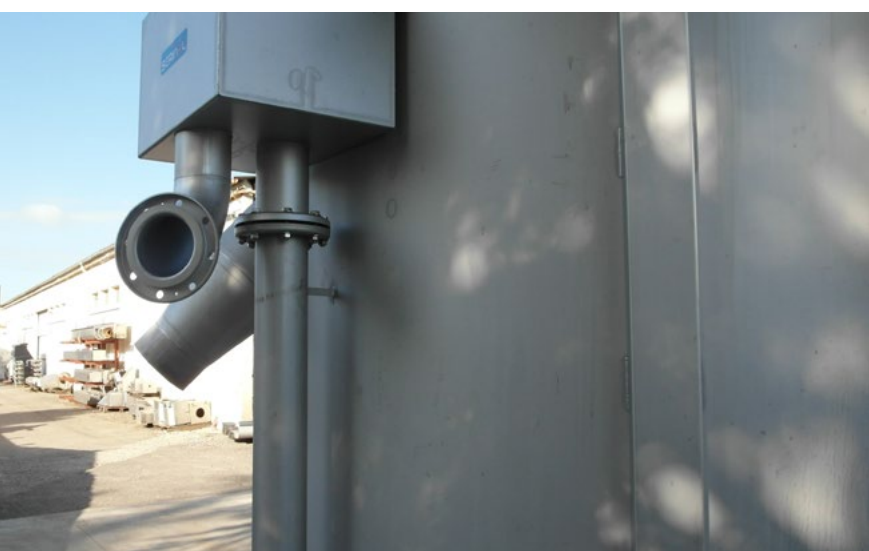
Sieves **SERTAM** (rotating) or **SERTEL** (elevating screen) installed on the plat.

Classifier

Sand classifier **SERSAB** recovering purged sediments.

Construction

Standard construction in stainless steel 304L, 316 L optional.



contact@serinol.com
+33 (0)4 68 76 52 52

65, avenue Ernest-Léonard
11150 BRAM FRANCE



Online product details
www.serinol.com