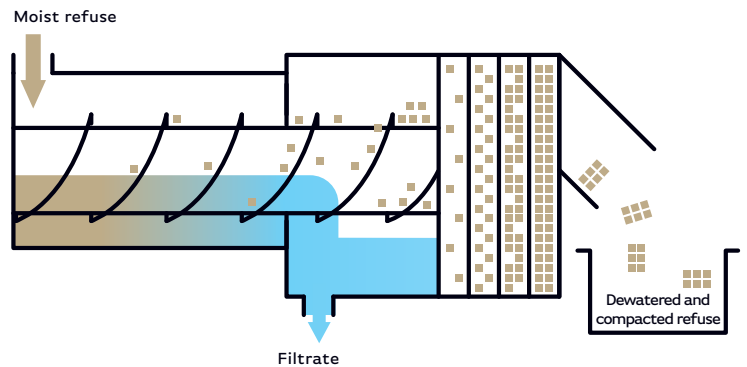


SCREW COMPACTORS

SERCOMP+

The high-dryness screw compactor **SERCOMP+** is the inclined version of the screw compactor **SERCOMP**. It ensures the pressing of screenings and sieving residues in water treatment stations.



Principle

The high-dryness screw compactor **SERCOMP+** is the inclined version of the screw compactor **SERCOMP**. It ensures the pressing of screenings and sieving residues in water treatment stations.

The pressing is carried out by an Archimedes' screw which pushes the residues into the filtering drum at the end of which a gate maintains a back pressure by means of a spring hinge.

The dripping effluent is collected in the compaction zone and at the screw feet to be channeled towards the lifting shaft.

Design features

The high-dryness screw compactor **SERCOMP+** consists of the following elements:

- A housing made of stainless steel sheet with an upper opening corresponding to the useful width of the screen to which it is associated,
- In the lower part, a **polyethylene lining** reduces frictions and the wear of the housing,
- A **draining area** on the lower part of the screw that ensures sewage collection. This drainage phase – prior to compaction, is facilitated by the caisson's 5° inclination,
- When the equipment is delivered in addition to a rotating sieve **SERTAM**, an integral hood on the filtering drum

and the screw trough ensures a complete protection of operators,

- A **housing with an upper door**, containing the draining drum.

The 500 mm length drum is made of perforated 3mm-thick stainless steel metal sheet.

In its lower part, a tube with a 65 mm diameter recovers draining waters and directs them towards the draining zone at the foot of the equipment. From there, a second drain allows their disposal.

In the upper side of the drum, the strainer is surmounted by a water wetting ramp to prevent the materials from drying out, -likely to cause clogging-, in case of prolonged stoppage,

- An **outlet chute** of compacted waste, in which the gate, assembled with adjustable-springs that closes the end of the filter drum, maintains the counter pressure. An Archimedes' screw made of high resistance steel with an external diameter, 150 or 200 mm, depending on the model and the flow rate of the waste to be compacted.

In the draining area, this screw drives a peripheral brush which ensures the cleaning of the strainer,

- A **geared motor to drive the screw**, 0,75 or 1.1 KW in power, following the model,

4 levelling feet made out of 60 X 60 mm stainless tube with mounting plates on the ground.

Options

Archimedes' screw

Extension of the Archimedes' screw to convey wastes further.

Bagger

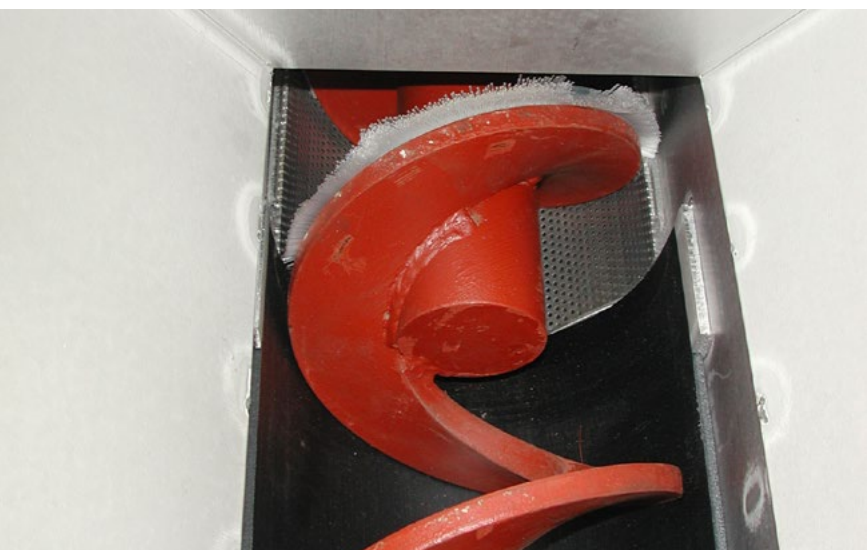
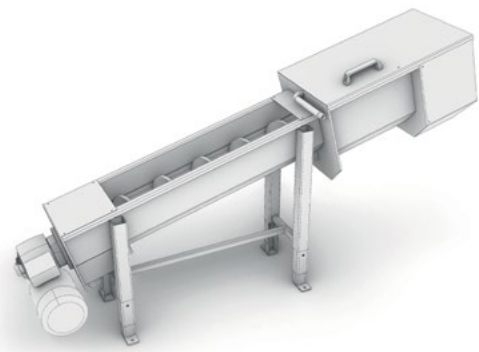
Possibility to add a bagger.

Compaction zone

Heat insulation and electric tracing of the compaction zone – necessary if there is a risk of frost.

Construction

Standard construction in stainless steel 304L, 316L optional.



Serinol
Water treatment solutions

contact@serinol.com
+33 (0)4 68 76 52 52

65, avenue Ernest-Léonard
11150 BRAM FRANCE



Online product details
www.serinol.com